

39-00210

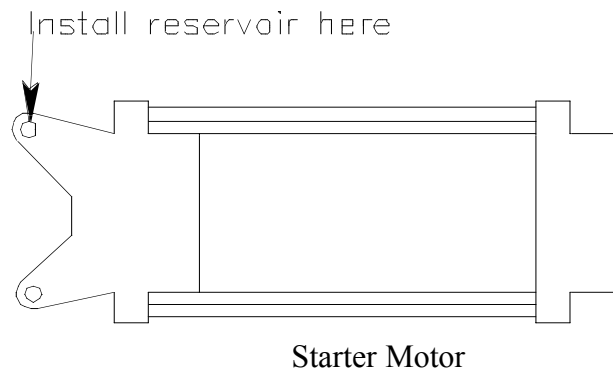
Yamaha V Star 1100 2-2 BIG WILLY *Mounting Instructions*

Thank you for buying a BUB! We are committed to producing a quality product that with proper installation and care should last for many years to come. If you ever have any questions, feel free to give us a call.

INSTALLATION

For ease of installation, remove the right side footpeg assembly by removing the two bolts that attach the footpeg bracket to the frame. Now remove the entire stock exhaust system. Your stock gaskets will be reused so be sure they are still in good shape. Replace if necessary.

The next step is to relocate the rear brake master cylinder reservoir. Remove the bolt that holds it in place at the frame bracket. Next, remove the top left side bolt that mounts the starter motor to the engine case. Using the longer 6mm bolt and the steel spacer provided, remount the brake reservoir and the reservoir heat shield in the new location.



Install the spiral exhaust rings and flanges on both pipes. To do so observe the following guidelines: ***With each header, slip the machined flange over the inlet slip of the header. The machined groove will face toward the inlet end of the pipe. To install the spiral ring, simply start at one end of the spiral and pull it down over the side of the exhaust slip and thread the ring around the slip until the entire ring is worked down past the slip and onto the header. The ring will fit in the machined groove of the flange when you install the header into the exhaust port***

Offer the front pipe to the bike and install flange nuts finger tight. Align the tab brackets at the rear of the pipe with the stock mounting bracket. Insert the single, smaller diameter .125 spacer between the front tab bracket and the mounting bracket and reinstall the stock mounting bolt. Insert the .250 spacer between the rear tab bracket and the mounting bracket and also reinstall the stock mounting bolt. Now tighten the front pipe at both the flange and the rear mounting locations.

(over)

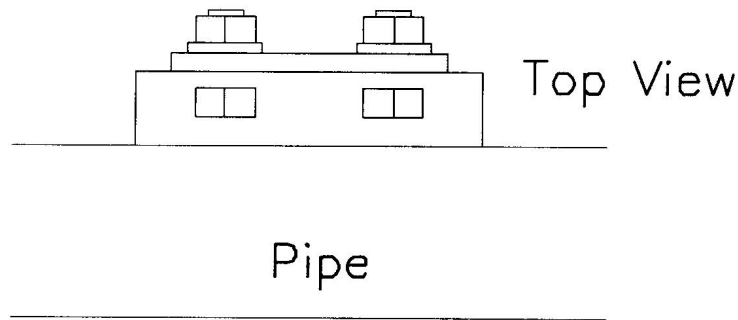
39-00210

Yamaha V Star 1100 2-2 BIG WILLY

Mounting Instructions

-Continued-

Now offer the rear pipe to the bike and install the flange bolts finger tight. Take the mounting plate supplied (1/8 x 2 x 3 3/8 with four holes) and insert the four 5/16 x 5/8 hex bolts through and back with flat washers and lock nuts loosely. Now slide the plate mount assembly with mounting hardware into the slotted brackets of both pipes. The heads of the bolts slide into the slotted brackets, through the mounting plate, and finally the flat washers and lock nuts.



Check alignment and tighten the rear pipe at the head and at the mounting plate assembly. Install the heat shields using the mounting springs provided.

To reinstall the footpeg assembly, it will need to be spaced out slightly for proper clearance. Insert the two .125 large diameter spacers between the mounting bracket and the frame at the two mounting locations and reinstall the stock mounting hardware. Tighten floorboard assembly.

DETAILS, DETAILS

Clean the pipes thoroughly before firing the bike as grease or fingerprints will become permanent with heat! Check all fasteners after the first ride, and again at all service intervals.

Have fun and thanks for buying a BUB!

BUB ENT. 180 Spring Hill Drive, Grass Valley, Ca 95945
Ph (530) 477 7490 (800) 934 9739 fax (530) 477 7489
www.bub.com